

POLIRAY[®]

PORTABLE FORENSIC LIGHT SOURCE



Portable – Lightweight

Pure & Tunable output

Wide Range of Filters

POLIRAY[®]

PORTABLE FORENSIC LIGHT SOURCE

Portable, Lightweight and Compact

Poliray is a portable lightweight hand held tunable light source designed specifically for forensic crime scene investigation.

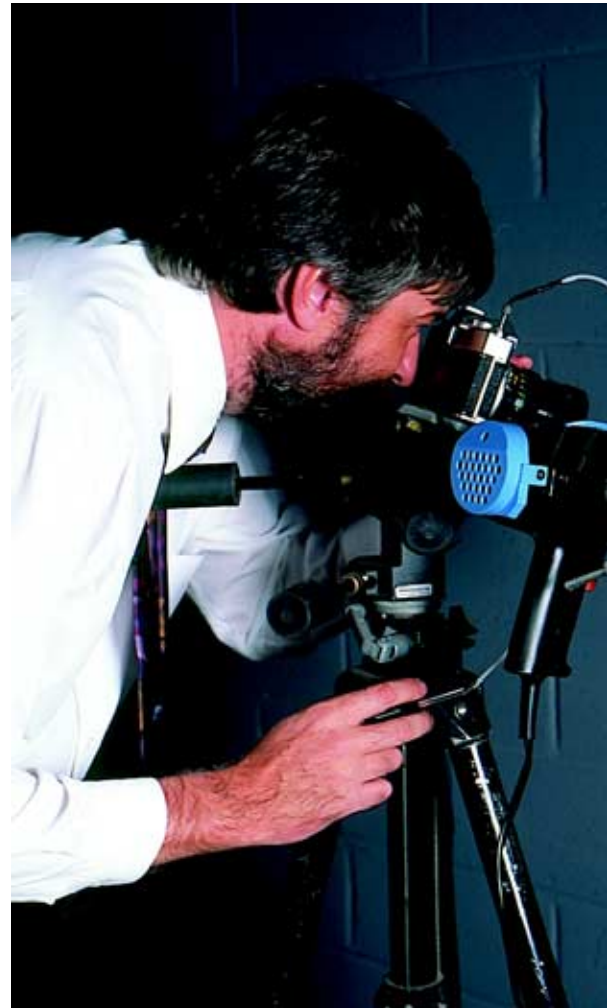
Poliray is battery powered to allow the investigator the freedom to move around the crime scene at will. The Poliray pistol grip design provides the investigator the freedom to operate the Poliray single-handed. It weighs only 1 Kg compared to the 10 Kgs of the conventional laboratory light sources.

Pure and Tunable

Poliray filters are high quality interference type that provide the necessary intensity for quality investigative work. Because Poliray uses interference filters the illuminating beam can be tuned (by tilting) to provide optimum conditions and quality results. Each filter is mounted in its own tunable independent filter holder. The holder is inserted in the optical path through the aperture set into the top of the Poliray barrel, allowing various wavelengths to be used selectively.

Powerful

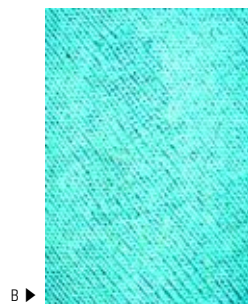
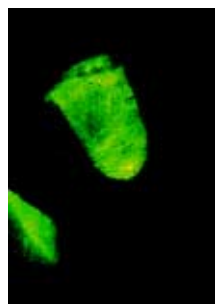
Poliray uses a powerful 75W halogen light and focusing optics to provide a convenient bright and even beam, suitable for all environments including daylight operation. The lamp is rated at over 3,000 average life time hours.



- ▶ **A:** FLOURESCENT POWDERED PRINTS REVEALED ON PLATE
- ▶ **B:** SEMEN STAIN ON FABRIC REVEALED BY THE POLIRAY[®]
- ▶ **C:** EASILY CHANGEABLE FILTERS
- ▶ **D:** MAINS VOLTAGE ADAPTER



A ▶



B ▶





C ▶



D ▶



Standard Poliray Filter

- **Broad band 450nm interference filter:**

The blue light 450 broad band filter is designed for general crime scene investigation. In particular it is ideal as a general searching tool for fluorescent trace evidence. The flexibility of the Poliray allows the operator to search small and large areas for semen or urea stains, saliva, contaminated fingerprints, fibres, hairs, paint, arson fire accelerants, blood stained evidence and the location of some illicit drugs. Since this is a fluorescent technique, the operator wears orange goggles to cut out the excitation light while viewing the fluorescence from the object being examined.

- **White light:**

Poliray produces a high intensity focused white light when no interference filter is inserted in the filter holder. This mode of operation is ideal for simple illumination of the scene for trace evidence retrieval including footprints, fibres and fingerprints on glass or non-porous surfaces. Certain dust prints become visible when examined in this manner.

- **Photography with KV550nm barrier filter:**

In order to photograph what the operator is visualising while wearing the orange goggles; the camera must be fitted with the KV550nm barrier filter and holder, which are supplied, as standard. Poliray comes with the commonly used 49mm and 52mm camera adapter rings, either of which are used to mount the filter holder to the camera.

- **Tripod mounting:**

Poliray can be easily mounted on a camera tripod using a standard camera mount. This allows the investigator to illuminate the evidence and remain free to take still or digital photography.

Optional Poliray Filters

- **Narrow band 415nm interference filter:**

Ideal for blood splatter and bloody fingerprints.

- **Narrow band 505nm interference filter:**

Used for illuminating superglue and ninhydrin treated latent fingerprints.

- **Narrow band 530nm interference filter:**

Suitable for illuminating latent fingerprints treated with DFO.

- **Narrow band 555nm interference filter:**

DFO treated fingerprints usually are excited using the 555nm band and can be viewed using red goggles.

- **Narrow band 590nm interference filter:**

Used to highlight the red ninhydrin developed print from other background colours.

- **Narrow band 610nm interference filter:**

A red light filter, also used for ninhydrin treated latent fingerprints.

ORDERING INFORMATION

POLIRAY KITS:

<i>Part No.</i>	<i>Description</i>
PRY.0001	Poliray Kit (100-120V 50/60Hz)
PRY.0002	Poliray Kit (200-240V 50/60Hz)

STANDARD KIT:

<i>Part No.</i>	<i>Description</i>
900.0028	450nm broad band mounted blue interference filter
707.0001	Battery pack, 12 Volts, flight rated
707.0002	Battery recharger 100-120V (PRY.0001 only)
707.0003	Battery recharger 200-240V (PRY.0002 only)
707.0006	Mains voltage adapter (100-120V 50/60Hz)
707.0004	Mains voltage adapter (200-240V 50/60Hz)
700.0015	Orange goggles.
900.0005	Camera barrier filter KV550, mounted
700.0008	Camera filter holder
700.0035	Camera stepping ring 49-58 diameter
700.0034	Camera stepping ring 52-58 diameter
707.0007	Spare 75W halogen Poliray lamp
703.0010	Poliray operators guide
900.0021	Carrying case for Poliray standard kit



OPTIONS:

<i>Part No.</i>	<i>Description</i>
900.0022	415nm mounted narrow band purple interference filter
900.0023	505nm mounted narrow band blue-green interference filter
900.0024	530nm mounted narrow band green interference filter
900.0025	555nm mounted narrow band orange interference filter
900.0026	590nm mounted narrow band red interference filter
900.0027	610nm mounted narrow band red interference filter
700.0016	Red goggles

Agent Information:

ROFIN AUSTRALIA PTY LTD

Melbourne Head Office • Unit 6 / 42-44 Garden Boulevard. • Dingley • Victoria 3172 Australia
Tel: +61 3 9558 0344 • Fax: +61 3 9558 0252 • E-Mail: info@rofin.com.au • Website: <http://www.rofin.com.au>